

Technical Data

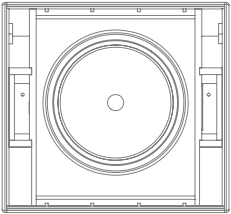
TouringWedge12



▶ we amplify emotions.



General Information



The AD-Systems TouringWedge12 is a high performance 12"/1.4" coaxial monitor wedge - the best choice for excellent stage monitor sound. Unusually clear and standing out vocal reproduction, rich lows, crisp and detailed highs are accompanied by an aesthetic and elegant appearance. Its linear tuned response and optimized coverage pattern ensure highest possible feedback resistance and maximum impact on stage. The low frequency transducer applied uses an advantageous 3.5" voice coil - a perfect match for fast and high level transients. The high frequency unit is equipped with a large circular hornflare ensuring precise directional behaviour. Classic disadvantages of traditional coaxial designs have been reduced considerably.

For optimized flexibility the enclosure is equipped with various rigging points and a pole plate socket enabling the use as FOH loudspeaker or as flown DJ-monitor.

Application

- ▶ High performance stage monitor wedge for vocal and instrumental performers
- ▶ Keyboard and guitar monitoring
- ▶ Sidefill monitoring for small and medium sized stages
- ▶ Expandable with subs forming up a compact front PA

Features

- ▶ Low profile shape and hidden connectors for discreet appearance in TV applications
- ▶ Coaxial design for perfectly symmetric coverage pattern
- ▶ 12"/1.4" high performance neodymium transducer
- ▶ compact enclosure made of Baltic birch plywood, Polyurea coated
- ▶ sturdy powder coated grille made of 2mm sheet steel

Specifications

Performance data

Basic layout	2-way coaxial, bass reflex, semi-active
Frequency response (-6 dB)	65 Hz - 18 kHz
Sensitivity 1W @ 1 m	99 dB (full space)
Maximum SPL	133 dB (SPL peak @ 1 m)
Horizontal coverage (-6 dB)	60°
Vertical coverage (-6 dB)	60°
Power handling	RMS 600W
	programme 1,200W
	peak 2,400W
Nominal impedance	8 Ω

Transducers / Components

Low mid frequency	12" Nd woofer w/ 3.5" voice coil, membrane w/ moisture repellent coating
Nominal impedance	8 Ω
Power handling	600W AES / 2,400W Peak
Sensitivity	99 dB, 1W @ 1W
High frequency	1.4" Nd compression driver w/ 2.5" voice coil
Nominal impedance	8 Ω
Power handling	90W AES / 320W Peak
Sensitivity	110 dB, 1W @ 1m
Horn	circular pattern, 60°, constant directivity
Crossover	2-way crossover w/ phase correction, division w/ 12dB/24dB at about 1.2 kHz

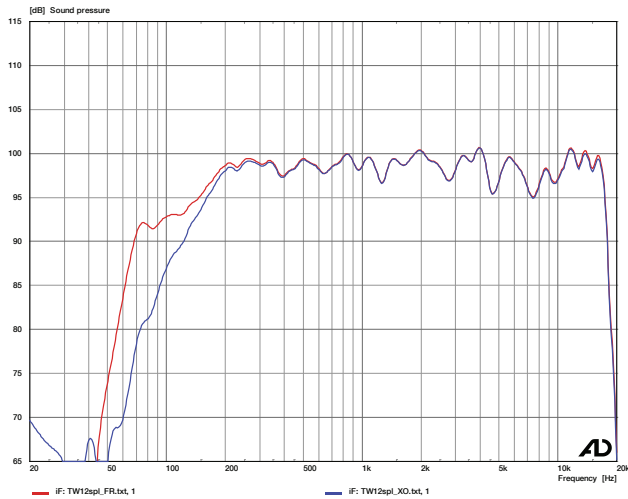
Physical data

Enclosure	Multi functional, 55° wedge angle, Baltic birch plywood construction, heavily braced, Polyurea coated
Rigging points	3x M10 threaded flypoints, pole mount receptacle
Colour	black; white and RAL standard colours on request
Protective Grille	sheet steel w/ 2mm thickness, hex-stamped, powder coated, black acoustic foam on inside
Connectors	2 x Speakon NL4 MP (1+/1-)
Dimensions (W x H x D)	500 x 334 x 463 mm
Net weight	21 kg

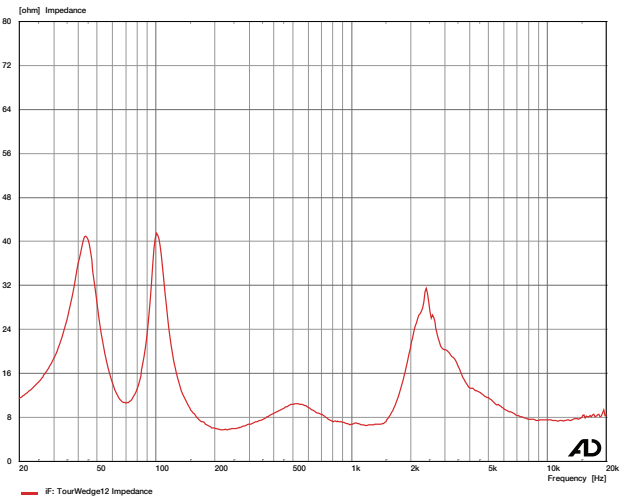


Measurement Data

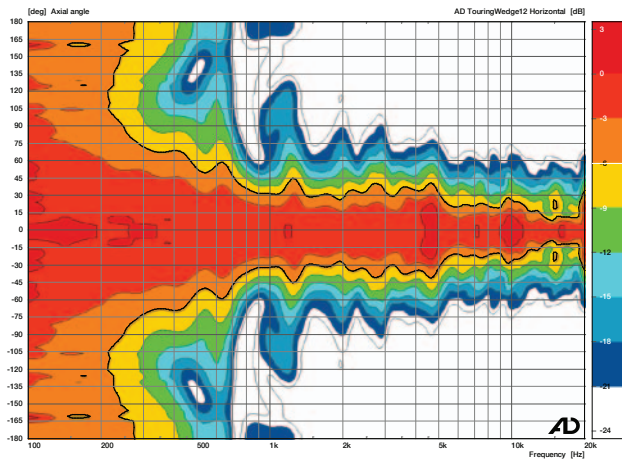
Processed frequency response



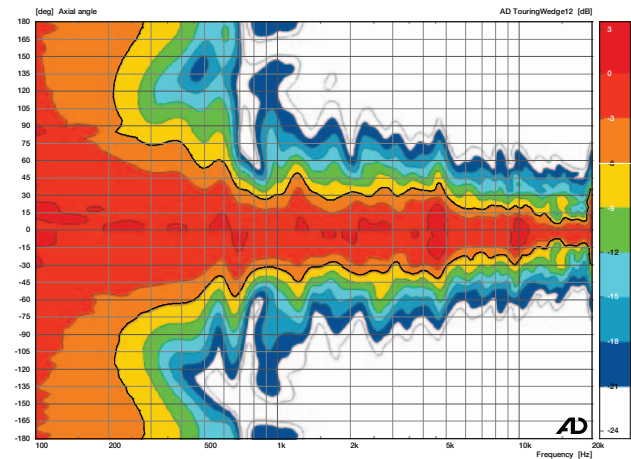
Impedance



Horizontal coverage pattern



Vertical coverage pattern



Notes on performance data and graphs:

- 1) Performance Specifications: All acoustic specifications rounded to nearest whole number.
Either AD Impulse DSP Amplifiers or external DSP with provided settings are required to achieve the specified performance.
- 2) Frequency response: Range of the processed response, where the level stays within 6dB from nominal sensitivity.
- 3) Power Handling: Is based on the AES power handling of the transducers.
- 4) Nominal Sensitivity: SPL produced by the unit at 1 Watt at nominal impedance, referenced to 1 Meter.
Measurement condition: Full space in the far field of the speaker. Time-windowed to approximate an anechoic environment.
- 5) Maximum SPL: Calculated from nominal sensitivity at stated peak input power.
- 6) Resolution: For better readability a 1/6 octave smoothing is applied to all response graphs shown.

All data provided are subject to change without prior notice.

Accessories

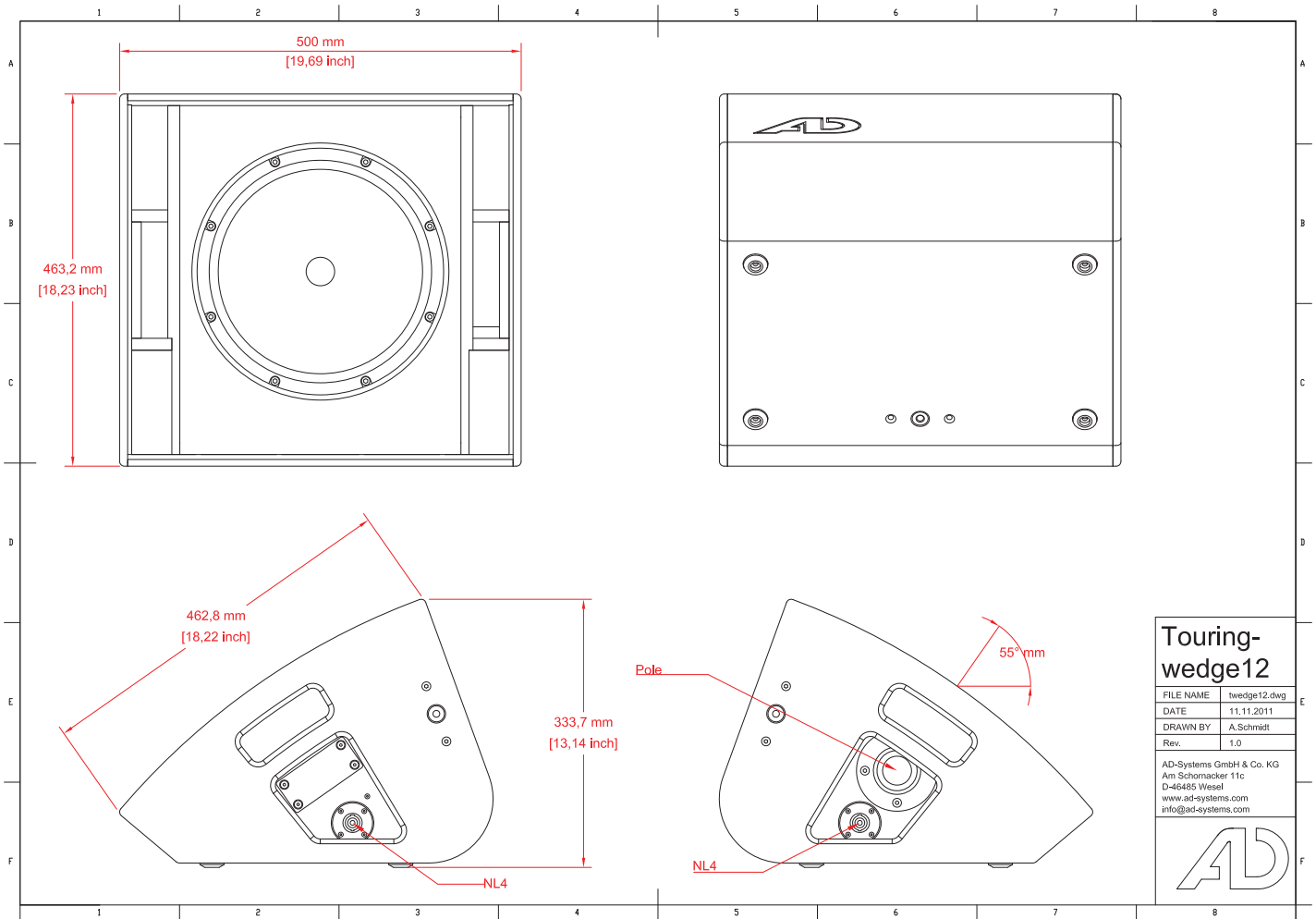
For safe transportation of two TourWedge12 units a Double Road Case is offered. With its trucking grid compatible dimensions and four 100mm swivel castors it is prepared perfectly to match the day-to-day road business demands.

The TourWedge12 flying bracket enables easy rigging at a truss construction (e.g. using a trigger clamp) or mounting to a low ceiling (fixed install).

tba.	TourWedge12 Double Road Case
tba.	TourWedge12 Flying Bracket



Drawings



Spare parts

710000467	12" Coaxial Transducer
tba.	12" LF Recone kit
710000501	1.4" Diaphragm
710000504	X-Over TourWedge12
710000474	Replacement grille

Architectural & Engineering Specifications

The professional 2-way monitor loudspeaker system shall incorporate a coaxial 12 inch / 1.4 inch neodymium transducer. The LF transducer shall be mounted in an optimally tuned bass reflex enclosure, the HF compression driver shall be coupled to a circular 60° constant directivity horn. The loudspeaker shall withstand short peaks of up to 2.400 Watt generating a maximum sound pressure level of 133 dB. System frequency response shall vary no more than +/-3dB from 65 Hz to 18 kHz measured on axis. The loudspeaker enclosure shall have a low profile wedge-type shape, be constructed of weatherproof Baltic birch plywood and finished in black Polyurea coating. Optionally all RAL standard colours shall be available. The loudspeaker components shall be protected by a powder coated grille made of hex-stamped sheet steel and internally attached acoustic foam in appropriate colour. The enclosure shall be equipped with threaded M10 flypoints to be used with the separately available flying bracket in suspended applications. A 35mm pole mount receptacle shall be provided hidden inside of one of the enclosure handles. Input connectors shall be Neutrik NL4 Speakon - one on either side of the enclosure inside the handles. CAAD simulation data for ULYSSES and EASE suites shall be available. The loudspeaker system shall be the AD-Systems TouringWedge12.

Optional features:

Flying bracket

Special colours: all standard RAL colours

Technical specifications:

Acoustical Design: Point source, passive loudspeaker, 2-way, coaxial

Components: 12" low-mid woofer w/ 3.5" voice coil / 1.4" HF driver w/ 2.5" voice coil

Power handling (nominal): 600 W

Power handling (programme): 1.200 W

Power handling (peak): 2.400 W

Nominal sensitivity: 99 dB

Maximum sound pressure level: 133 dB

Frequency response: 65 Hz – 18 kHz

Nominal coverage pattern (h x v): 60° circular

Nominal impedance: 8 Ohm

Features:

Enclosure: 15mm Baltic birch plywood, low-profile shape, Polyurea coated

Protective grille: hex-stamped sheet steel, powder coated

Rigging hardware: 3x M10, pole mount receptacle

Connectors: 2x Neutrik NL4 Speakon

Front design: Acoustic foam in appropriate colour behind the grille

Dimensions (W x H x D): 500 x 334 x 463 mm

Net weight: 21 kg

CAAD simulation data: ULYSSES, EASE

Brand: AD-Systems

Model: TouringWedge12



For more information please visit our website! There you will find also:

Autocad Files (DXF, DWG, PDF)

Measurement data for acoustical simulation in Ease and Ulysses

Manuals

Architectural & Engineering Specs

AD-Systems Audiotechnik GmbH
Am Schornacker 11c
D-46485 Wesel

T: +49 (0) 281 4 60 90 7-0
F: +49 (0) 281 4 60 90 7-22
E: info@ad-systems.com
W: www.ad-systems.com